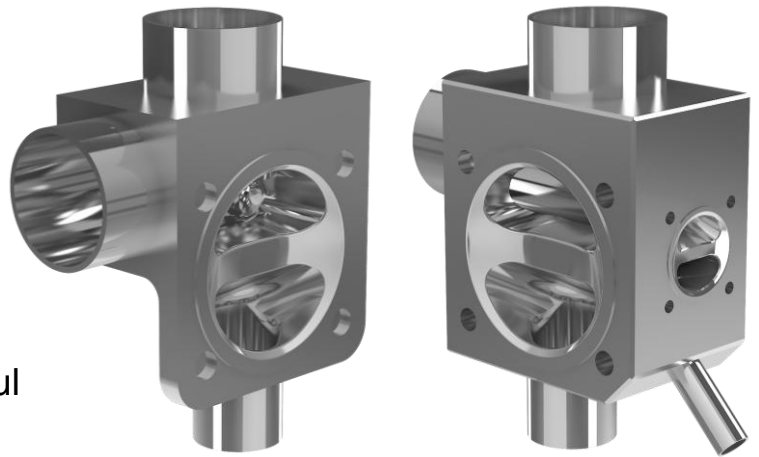


Zero Dead Leg Valve

Forged stainless steel body,
Manually or pneumatically operated

- Compact design with zero dead leg
- Optimum security against microbial growth
- Top entry design
- Fully machined from SS 316L bar-stock
- CIP/SIP capable and crevice free – No internal fabrication weld
- Self-draining capabilities
- Option of separate sampling / injection port available – most useful for high purity systems
- Fully Autoclavable



Without Separate Sampling port Model S03V01A0 With Separate Sampling port Model S04V02B0

Commercially available under Series MP as

Series 41 forged Zero Dead Leg (ZDL) valve has a flow-optimized stainless steel body, a diaphragm, and options of manual bonnet assembly or actuator. The stainless steel body is available with various surface finish.

The diaphragm is both a switch as well as a sealing element for the media. It is easily replaceable.

Option of manual bonnet assembly or actuator is provided for the protection of diaphragm and internal mechanism.

Combination of inlet port and flow through port allow media to continuously flow in the loop. Due to this special feature, dead legs are virtually eliminated at inlet port and when the valve is opened one can get clear uncontaminated media free from bacterial growth or other contaminants. Option of a separate sampling port is also available. This port can also be used as a CIP/SIP port. The outlet valve can also be used as drain port during sterilization.

Technical Data

Connection Size	1/2" – 3"	
MOC – Wetted (Contact)	Stainless Steel 316L	
MOC – Non-wetted (Non- contact)	Polyamide or ASTM A351 CF8 (SS 304)	
Seal Material	EPDM, PTFE	
Media	Neutral gases and liquids, high purity, sterile, aggressive or abrasive fluids	
Viscosity	Up to viscous	
Surface Finish	Mechanical or Electro Polish	
Media temperature	EPDM	-10°C to +75 °C
	PTFE	-10°C to +90 °C
Ambient temperature	Up to +90 °C	
Sterilization temperature	EPDM	Briefly up to +130 °C
	PTFE	Briefly up to +150 °C
End connections	ASME BPE • V-band (Hygienic) Clamp • Butt-Weld - EN ISO 1127/ISO 4200 and BS 4825 are available on request	
Installation	With inlet port in upright position	
Options	Separate sampling connection	

In case of special application conditions, please e-mail at: rnd@leistung.in
The technical specifications are subject to change without notice.