

Rotary Spray Ball, Machined stainless steel body

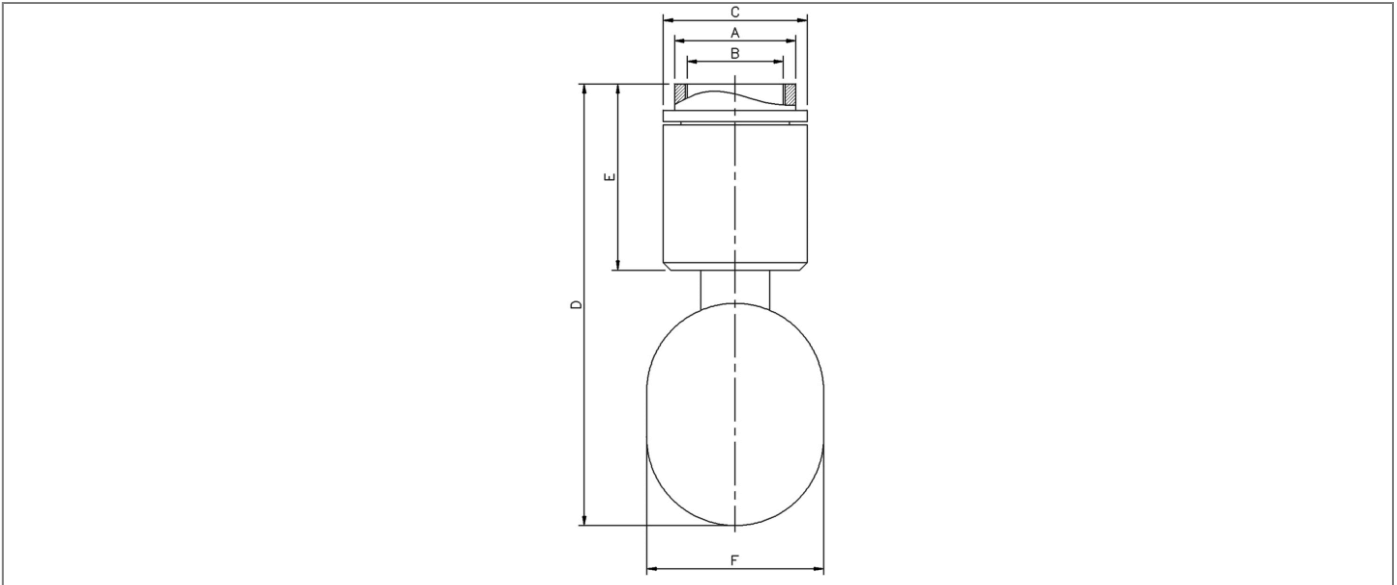
- Self Rotating and Cleaning
- Fully Machined from SS 316L
- Easy Mounting and Inspection
- Complete 360° Spray Coverage
- Can be installed at any angle
- Various Surface Finish Available



Series SB rotary spray ball is a self rotating tank cleaning device. The spray ball is driven by the cleaning fluid. The ball has knife through cuts on its surface, which allow the fluid to pass through it and create powerful jets. Powerful spray jets cover cleaning of tanks all around 360°.

Technical Data	
Connection Size	1/2", 3/4", 1 1/4"
MOC	Stainless Steel 316L
Media	Cleaning fluid, water and steam
Viscosity	Up to viscous
Surface finish	Blasted, Mechanical or Electro Polish
Media temperature	-10°C to +90 °C
Ambient temperature	Up to +90 °C
End connections	Threaded BSP Coupling
Installation	As required

Rotary spray ball, machined stainless steel body



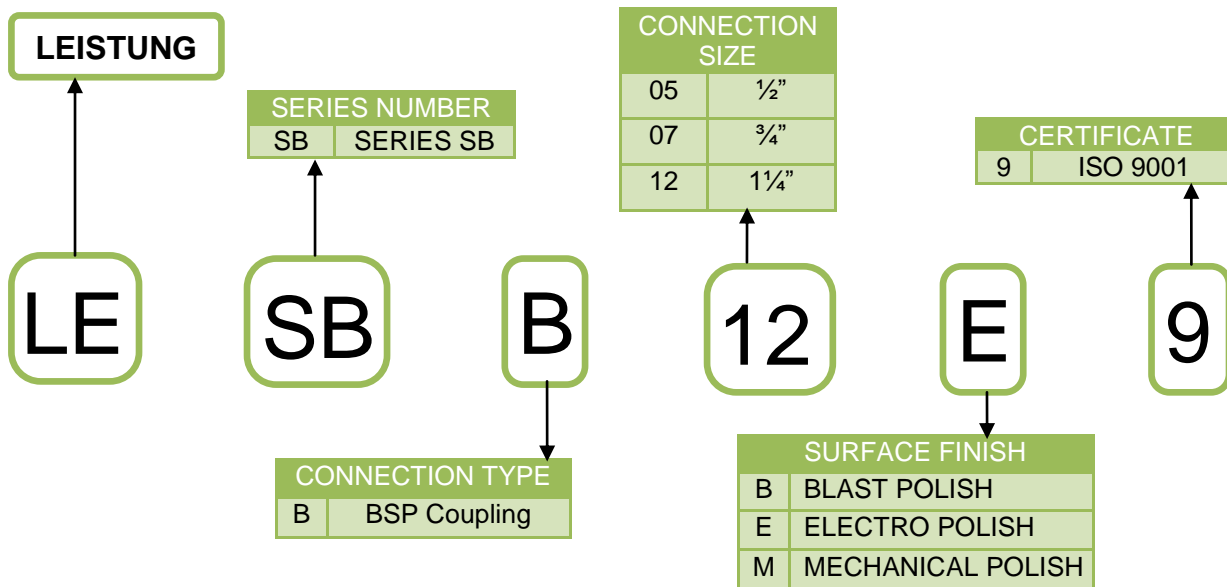
Dimensions for Spray Ball

Conn. Size	Across Flat (A/F) size	Coupling size	OD of Coupling	Total Height of Spray Ball	Height of Body	Minor OD of Ball
	A (mm)	B (mm)	C (mm)	D (mm)	E (mm)	F (mm)
1/2"	A/F 27	1/2" BSPF – 14 TPI	31.0	90.0	42.0	35.0
3/4"	A/F 32	3/4" BSPF – 14 TPI	38.0	111.0	48.0	45.0
1 1/4"	A/F 50	1 1/4" BSPF – 11 TPI	50.0	137.0	54.0	61.0

Note: Datasheet available on request.

Ordering Chart

ORDER IDENTIFICATION NUMBER



In case of special application conditions, please e-mail at: rnd@leistung.in
The technical specifications are subject to change without notice.