

## User Point Diaphragm Valve, Forged stainless steel body, manually operated

- Very useful at sampling / injection points on high purity systems
- Compact construction
- Hermetical separation of fluids from the operating mechanism by diaphragm
- Fully machined from SS 316L bar-stock – no welded components
- Zero dead leg
- Self-draining operation
- Fully Autoclavable
- Various internal surface finish available each with less than 0.40 Ra



Series 30 manually operated diaphragm valve has a flow-optimized stainless steel body, a diaphragm, a bonnet and manual handle. The stainless steel body is available with various surface finish.

The diaphragm is both a switch as well as a sealing element for the media. It is easily replaceable.

The bonnet is provided for the protection of diaphragm and handle-mechanism.

The upright connection flow can be continually adjusted with proper positioning of the handle. The position indicator is provided at the top of the handle.

This valve is designed for zero dead leg and can be mounted to be self-draining. This allows high flow capacity and variety of applications.

### Technical Data

Technical Data		
<b>Connection Size</b>	½" - 3"	
<b>MOC – Wetted (Contact)</b>	Stainless Steel 316L	
<b>MOC – Non-wetted (Non- contact)</b>	Polyamide or ASTM A351 CF8 (SS 304)	
<b>Seal material</b>	EPDM, PTFE	
<b>Media</b>	Neutral gases and liquids, high purity, sterile, aggressive or abrasive fluids	
<b>Viscosity</b>	Up to viscous	
<b>Surface finish</b>	Mechanical or Electro Polish	
<b>Media temperature</b>	EPDM	-10°C to +75 °C
	PTFE	-10°C to +90 °C
<b>Ambient temperature</b>	Up to +90 °C	
<b>Sterilization temperature</b>	EPDM	Briefly up to +130 °C
	PTFE	Briefly up to +150 °C
<b>End connections</b>	ASME BPE - EN ISO 1127/ISO 4200 and BS 4825 are available on request	
<b>Installation</b>	As required, preferably with handle in upright position	
<b>Installation for self-draining mounting</b>	Tilted 10° to 35° to the horizontal and inclined 3° to 5° to the direction of flow	
<b>Options</b>	Locking function available with polyamide bonnet	

User point diaphragm valve, forged stainless steel body, manually operated

Body with Butt-weld End

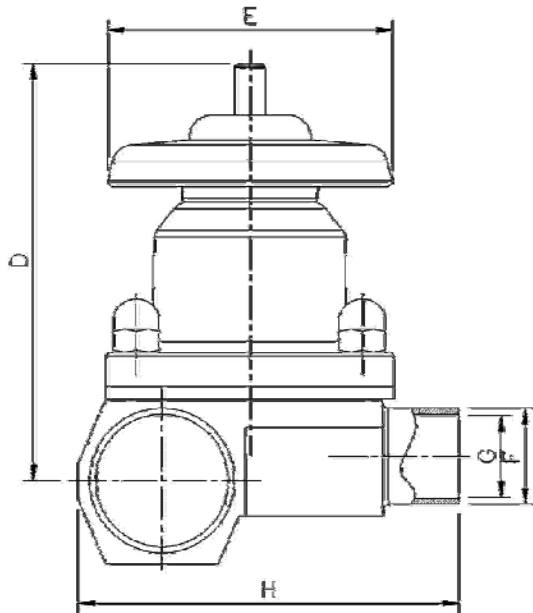


Figure 301

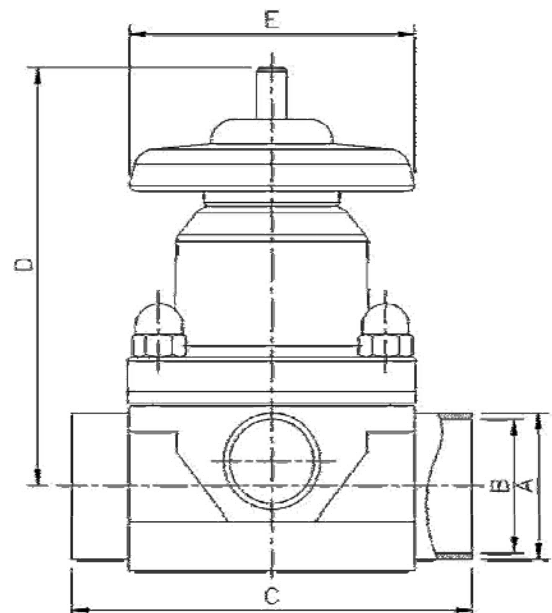


Figure 302

Dimensions for end connections according to ASME BPE connection type

Bonnet and Handle - Stainless Steel (Refer Figure 301 & 302)

Main Conn. Size	Main Pipe OD	Main Pipe ID	Face to Face Length	Max. Valve Height from Pipe Center	Outside Diameter of Handle	Upright Conn. Size	Upright Pipe OD	Upright Pipe ID	Valve Width
	A	B	C	D	E		F	G	H
	(mm)	(mm)	(mm)	(mm)	(mm)		(mm)	(mm)	(mm)
1/2"	12.70	9.40	88.0	88.6	80.5	1/2"	12.70	9.40	65.0
3/4"	19.05	15.75	88.0	91.2	80.5	1/2"	12.70	9.40	65.0
3/4"	19.05	15.75	88.0	98.0	80.5	3/4"	19.05	15.75	65.0
1"	25.40	22.10	88.0	97.6	80.5	1/2"	12.70	9.40	70.6
1"	25.40	22.10	88.0	104.4	80.5	3/4"	19.05	15.75	70.6
1"	25.40	22.10	113.0	117.7	89.7	1"	25.40	22.10	89.0
1 1/2"	38.10	34.80	88.0	104.3	80.5	1/2"	12.70	9.40	76.5
1 1/2"	38.10	34.80	88.0	111.1	80.5	3/4"	19.05	15.75	83.3
1 1/2"	38.10	34.80	113.0	124.4	89.7	1"	25.40	22.10	99.2
1 1/2"	38.10	34.80	134.9	149.6	115.8	1 1/2"	38.10	34.80	111.9
2"	50.80	47.50	88.0	109.7	80.5	1/2"	12.70	9.40	94.4
2"	50.80	47.50	88.0	116.5	80.5	3/4"	19.05	15.75	96.6
2"	50.80	47.50	113.0	129.8	89.7	1"	25.40	22.10	108.0
2"	50.80	47.50	134.9	155.0	115.8	1 1/2"	38.10	34.80	121.0
2"	50.80	47.50	134.9	155.0	115.8	2"	50.80	47.50	121.0
2 1/2"	63.50	60.20	88.0	115.6	80.5	1/2"	12.70	9.40	105.3
2 1/2"	63.50	60.20	88.0	122.4	80.5	3/4"	19.05	15.75	105.3
2 1/2"	63.50	60.20	113.0	135.7	89.7	1"	25.40	22.10	122.0
2 1/2"	63.50	60.20	134.9	160.9	115.8	1 1/2"	38.10	34.80	134.5
2 1/2"	63.50	60.20	134.9	160.9	152.5	2"	50.80	47.50	134.5
2 1/2"	63.50	60.20	159.1	179.3	152.5	2 1/2"	63.50	60.20	146.2
3"	76.20	72.90	88.0	122.5	80.5	1/2"	12.70	9.40	100.8
3"	76.20	72.90	88.0	129.3	80.5	3/4"	19.05	15.75	105.3
3"	76.20	72.90	113.0	142.6	89.7	1"	25.40	22.10	134.9
3"	76.20	72.90	134.9	167.8	115.8	1 1/2"	38.10	34.80	147.3
3"	76.20	72.90	134.9	183.2	152.5	2"	50.80	47.50	147.3
3"	76.20	72.90	159.1	186.2	152.5	2 1/2"	63.50	60.20	158.9

User point diaphragm valve, forged stainless steel body, manually operated  
Body with Butt-weld End

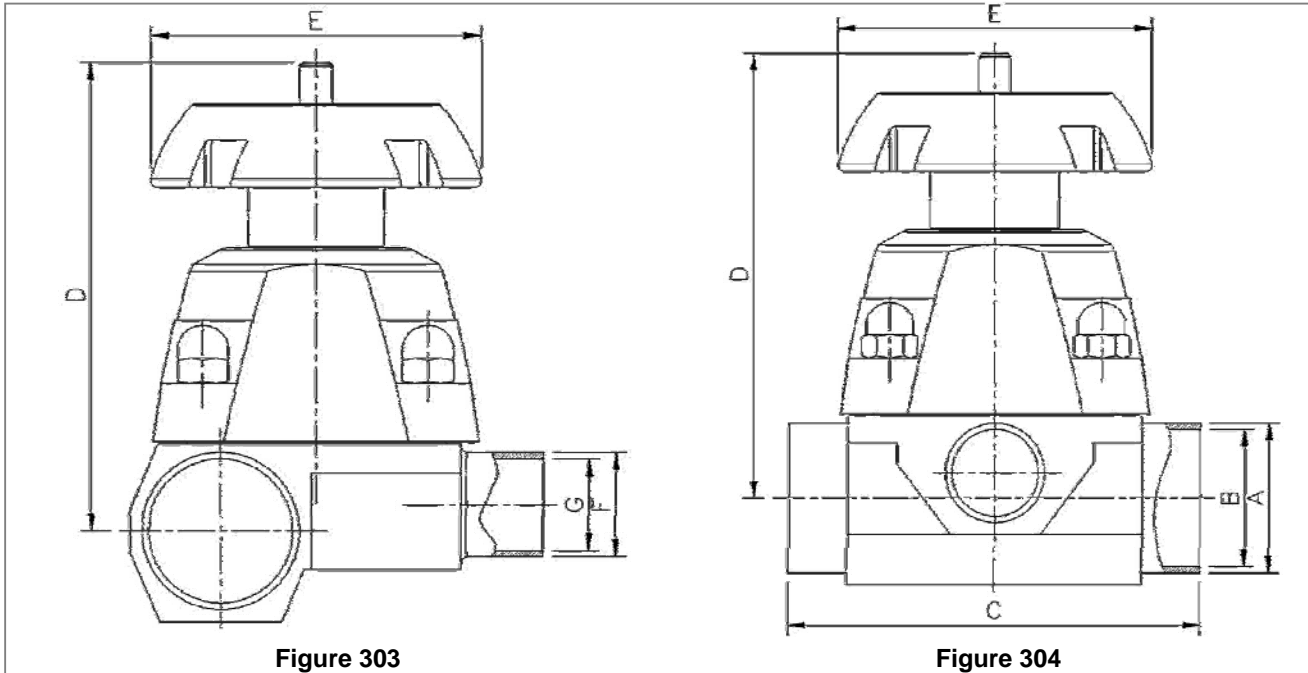


Figure 303

Figure 304

Dimensions for end connections according to ASME BPE connection type

Bonnet and Handle - Polyamide (Refer Figure 303 & 304)									
Main Conn. Size	Main Pipe OD	Main Pipe ID	Face to Face Length	Max. Valve Height from Pipe Center	Outside Diameter of Handle	Upright Conn. Size	Upright Pipe OD	Upright Pipe ID	Valve Width
	A	B	C	D	E		F	G	H
	(mm)	(mm)	(mm)	(mm)	(mm)		(mm)	(mm)	(mm)
1/2"	12.70	9.40	88.0	93.5	80.8	1/2"	12.70	9.40	65.0
3/4"	19.05	15.75	88.0	96.1	80.8	1/2"	12.70	9.40	65.0
3/4"	19.05	15.75	88.0	105.3	80.8	3/4"	19.05	15.75	65.0
1"	25.40	22.10	88.0	102.5	80.8	1/2"	12.70	9.40	70.6
1"	25.40	22.10	88.0	111.7	80.8	3/4"	19.05	15.75	70.6
1"	25.40	22.10	113.0	123.2	94.0	1"	25.40	22.10	89.0
1 1/2"	38.10	34.80	88.0	109.2	80.8	1/2"	12.70	9.40	76.5
1 1/2"	38.10	34.80	88.0	118.4	80.8	3/4"	19.05	15.75	83.3
1 1/2"	38.10	34.80	113.0	129.9	94.0	1"	25.40	22.10	99.2
1 1/2"	38.10	34.80	134.9	142.4	118.2	1 1/2"	38.10	34.80	111.9
2"	50.80	47.50	88.0	114.6	80.8	1/2"	12.70	9.40	94.4
2"	50.80	47.50	88.0	123.8	80.8	3/4"	19.05	15.75	96.6
2"	50.80	47.50	113.0	135.8	94.0	1"	25.40	22.10	108.0
2"	50.80	47.50	134.9	147.8	118.2	1 1/2"	38.10	34.80	121.0
2"	50.80	47.50	134.9	147.8	149.7	2"	50.80	47.50	121.0
2 1/2"	63.50	60.20	88.0	120.5	80.8	1/2"	12.70	9.40	105.3
2 1/2"	63.50	60.20	88.0	129.7	80.8	3/4"	19.05	15.75	105.3
2 1/2"	63.50	60.20	113.0	141.2	94.0	1"	25.40	22.10	122.0
2 1/2"	63.50	60.20	134.9	153.7	118.2	1 1/2"	38.10	34.80	134.5
2 1/2"	63.50	60.20	134.9	153.7	149.7	2"	50.80	47.50	134.5
2 1/2"	63.50	60.20	159.1	187.3	149.7	2 1/2"	63.50	60.20	146.2
3"	76.20	72.90	88.0	127.4	80.8	1/2"	12.70	9.40	100.8
3"	76.20	72.90	88.0	136.6	80.8	3/4"	19.05	15.75	105.3
3"	76.20	72.90	113.0	148.1	94.0	1"	25.40	22.10	134.9
3"	76.20	72.90	134.9	160.6	118.2	1 1/2"	38.10	34.80	147.3
3"	76.20	72.90	134.9	191.2	149.7	2"	50.80	47.50	147.3
3"	76.20	72.90	159.1	194.2	149.7	2 1/2"	63.50	60.20	158.9

User point diaphragm valve, forged stainless steel body, manually operated  
 Body with V-band (Hygienic) Clamp Connector

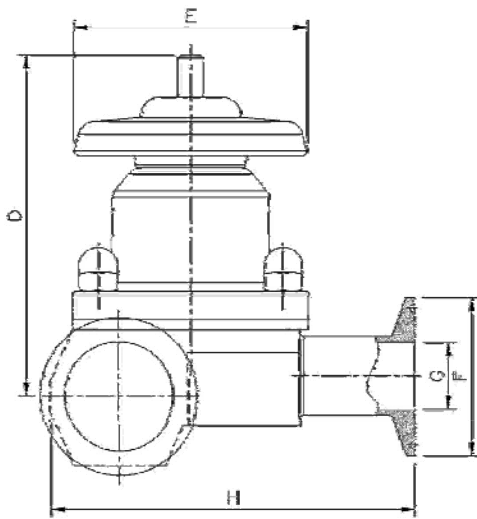


Figure 305

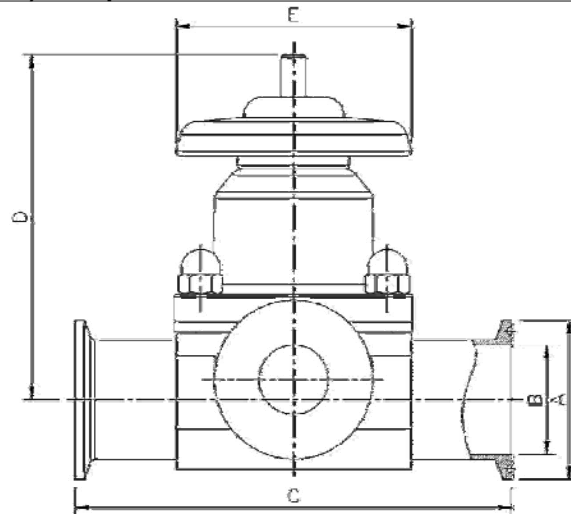


Figure 306

Dimensions for end connections according to ASME BPE connection type

Bonnet and Handle - Stainless Steel (Refer Figure 305 & 306)									
Main Conn. Size	Main Flange OD	Main Pipe ID	Face to Face Length	Max. Valve Height from Pipe Center	Outside Diameter of Handle	Upright Conn. Size	Upright Flange OD	Upright Pipe ID	Valve Width
	A	B	C	D	E		F	G	H
	(mm)	(mm)	(mm)	(mm)	(mm)		(mm)	(mm)	(mm)
1/2"	25.00	9.40	113.4	88.6	59.5	1/2"	25.00	9.40	77.7
3/4"	25.00	15.75	113.4	91.2	59.5	1/2"	25.00	9.40	77.7
3/4"	25.00	15.75	113.4	98.0	59.5	3/4"	25.00	15.75	77.7
1"	50.40	22.10	113.4	97.6	59.5	1/2"	25.00	9.40	83.3
1"	50.40	22.10	113.4	104.4	59.5	3/4"	25.00	15.75	83.3
1"	50.40	22.10	138.4	117.7	72.0	1"	50.40	22.10	101.7
1 1/2"	50.40	34.80	113.4	104.3	59.5	1/2"	25.00	9.40	89.2
1 1/2"	50.40	34.80	113.4	111.1	59.5	3/4"	25.00	15.75	96.0
1 1/2"	50.40	34.80	138.4	124.4	72.0	1"	50.40	22.10	111.9
1 1/2"	50.40	34.80	160.3	149.6	109.5	1 1/2"	50.40	34.80	124.6
2"	63.90	47.50	113.4	109.7	59.5	1/2"	25.00	9.40	107.1
2"	63.90	47.50	113.4	116.5	59.5	3/4"	25.00	15.75	109.3
2"	63.90	47.50	138.4	129.8	72.0	1"	50.40	22.10	120.7
2"	63.90	47.50	160.3	155.0	109.5	1 1/2"	50.40	34.80	133.7
2"	63.90	47.50	160.3	155.0	109.5	2"	63.90	47.50	133.7
2 1/2"	77.40	60.20	113.4	115.6	59.5	1/2"	25.00	9.40	118.0
2 1/2"	77.40	60.20	113.4	122.4	59.5	3/4"	25.00	15.75	118.0
2 1/2"	77.40	60.20	138.4	135.7	72.0	1"	50.40	22.10	134.7
2 1/2"	77.40	60.20	160.3	160.9	109.5	1 1/2"	50.40	34.80	147.2
2 1/2"	77.40	60.20	160.3	160.9	109.5	2"	63.90	47.50	147.2
2 1/2"	77.40	60.20	184.5	179.3	152.0	2 1/2"	77.40	60.20	158.9
3"	90.90	72.90	113.4	122.5	59.5	1/2"	25.00	9.40	113.5
3"	90.90	72.90	113.4	129.3	59.5	3/4"	25.00	15.75	118.0
3"	90.90	72.90	138.4	142.6	72.0	1"	50.40	22.10	147.6
3"	90.90	72.90	160.3	167.8	109.5	1 1/2"	50.40	34.80	160.0
3"	90.90	72.90	160.3	183.2	109.5	2"	63.90	47.50	160.0
3"	90.90	72.90	184.5	186.2	152.0	2 1/2"	77.40	60.20	171.6

User point diaphragm valve, forged stainless steel body, manually operated  
Body with V-band (Hygienic) Clamp Connector

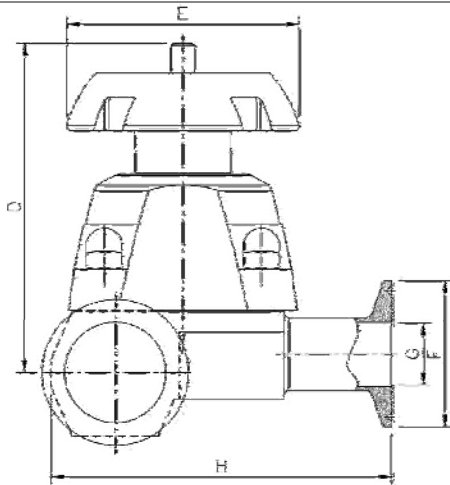


Figure 307

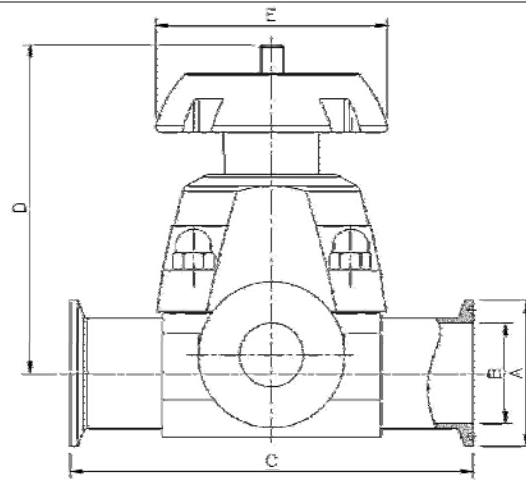


Figure 308

Dimensions for end connections according to ASME BPE connection type

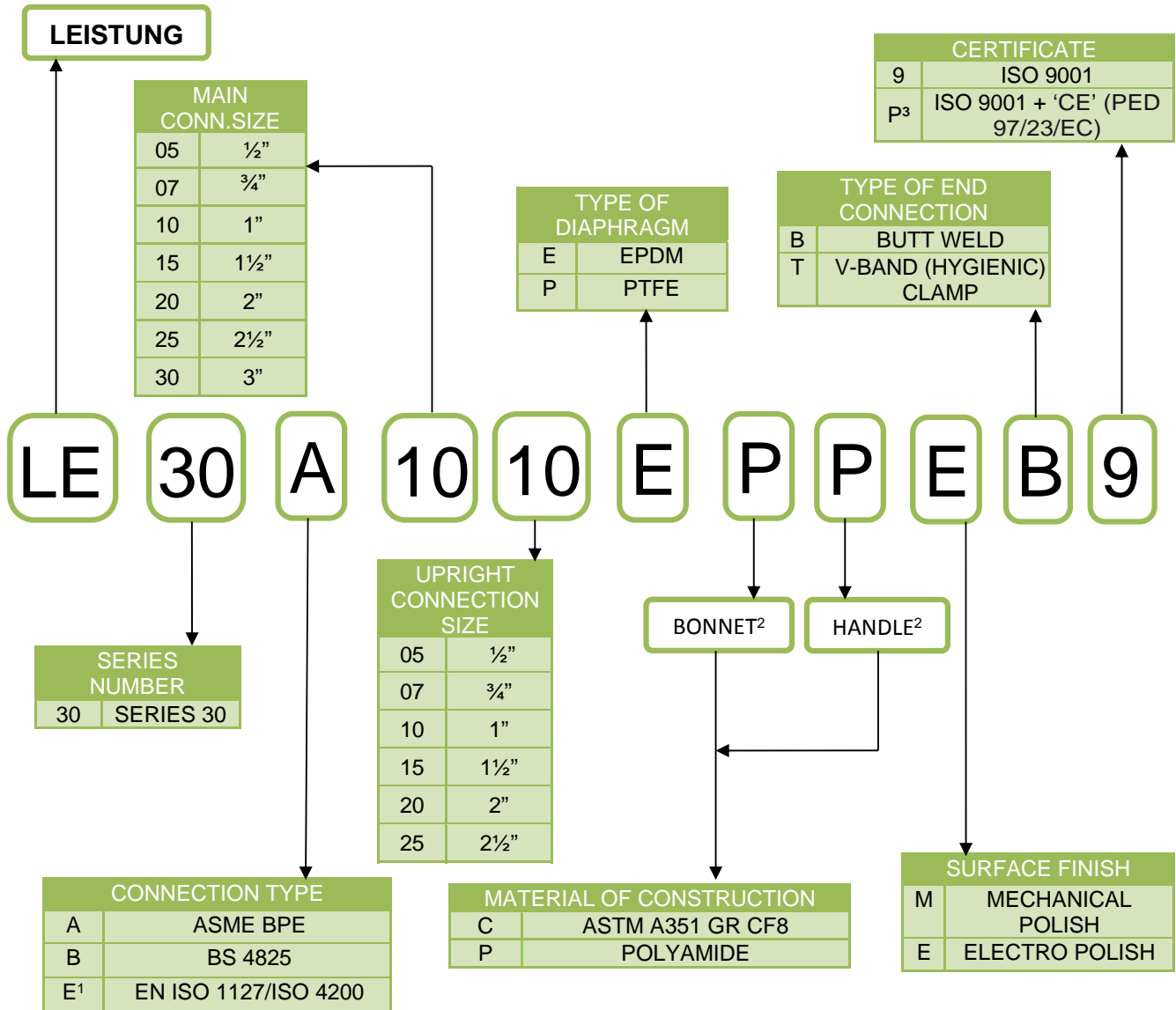
Bonnet and Handle - Polyamide (Refer Figure 307 & 308)									
Main Conn. Size	Main Flange OD	Main Pipe ID	Face to Face Length	Max. Valve Height from Pipe Center	Outside Diameter of Handle	Upright Conn. Size	Upright Flange OD	Upright Pipe ID	Valve Width
	A	B	C	D	E		F	G	H
	(mm)	(mm)	(mm)	(mm)	(mm)		(mm)	(mm)	(mm)
1/2"	25.00	9.40	113.4	93.5	79.0	1/2"	25.00	9.40	77.7
3/4"	25.00	15.75	113.4	96.1	79.0	1/2"	25.00	9.40	77.7
3/4"	25.00	15.75	113.4	105.3	59.5	3/4"	25.00	15.75	77.7
1"	50.40	22.10	113.4	102.5	79.0	1/2"	25.00	9.40	83.3
1"	50.40	22.10	113.4	111.7	79.0	3/4"	25.00	15.75	83.3
1"	50.40	22.10	138.4	123.2	92.0	1"	50.40	22.10	101.7
1 1/2"	50.40	34.80	113.4	109.2	79.0	1/2"	25.00	9.40	89.2
1 1/2"	50.40	34.80	113.4	118.4	79.0	3/4"	25.00	15.75	96.0
1 1/2"	50.40	34.80	138.4	129.9	92.0	1"	50.40	22.10	111.9
1 1/2"	50.40	34.80	160.3	142.4	116.5	1 1/2"	50.40	34.80	124.6
2"	63.90	47.50	113.4	114.6	79.0	1/2"	25.00	9.40	107.1
2"	63.90	47.50	113.4	123.8	59.5	3/4"	25.00	15.75	109.3
2"	63.90	47.50	138.4	135.8	92.0	1"	50.40	22.10	120.7
2"	63.90	47.50	160.3	147.8	116.5	1 1/2"	50.40	34.80	133.7
2"	63.90	47.50	160.3	147.8	116.5	2"	63.90	47.50	133.7
2 1/2"	77.40	60.20	113.4	120.5	59.5	1/2"	25.00	9.40	118.0
2 1/2"	77.40	60.20	113.4	129.7	59.5	3/4"	25.00	15.75	118.0
2 1/2"	77.40	60.20	138.4	141.2	92.0	1"	50.40	22.10	134.7
2 1/2"	77.40	60.20	160.3	153.7	109.5	1 1/2"	50.40	34.80	147.2
2 1/2"	77.40	60.20	160.3	153.7	116.5	2"	63.90	47.50	147.2
2 1/2"	77.40	60.20	184.5	187.3	149.0	2 1/2"	77.40	60.20	158.9
3"	90.90	72.90	113.4	127.4	59.5	1/2"	25.00	9.40	113.5
3"	90.90	72.90	113.4	136.6	59.5	3/4"	25.00	15.75	118.0
3"	90.90	72.90	138.4	148.1	92.0	1"	50.40	22.10	147.6
3"	90.90	72.90	160.3	160.6	109.5	1 1/2"	50.40	34.80	160.0
3"	90.90	72.90	160.3	191.2	116.5	2"	63.90	47.50	160.0
3"	90.90	72.90	184.5	194.2	149.0	2 1/2"	77.40	60.20	171.6

Notes:

1. For V-band (Hygienic) clamp connections, clamp connector will be welded to the valve body with butt-weld end. Internal finish will be provided as per customer request.
2. Dimensions and tolerances for end connection and face-to-face length are as per ASME BPE.
4. All other dimensions are approximate and subject to change without prior notice.
5. Dimensions for valves with steel bonnet and polyamide handle will be provided on request.

**Ordering Chart**

**ORDER IDENTIFICATION NUMBER**



**Notes:**

- 1 – EN ISO 1127/ISO 4200 offers standards for butt-weld end connections only.
- 2 – Combination of polyamide bonnet and steel handle (LE30XXXXXXPCXXX) is not available.
- 3 – 'CE'-marking is applicable for valves with main connection sizes 1 1/2", 2", 2 1/2" and 3" only.
- 4 – Refer tables for available combination of end connections. Consult Leistung Engineering Pvt. Ltd. for further information.
- 5 – Valves with end connection sizes according to EN ISO 1127/ISO 4200 and BS 4825 are available on request.

In case of special application conditions, please e-mail at: [rnd@leistung.in](mailto:rnd@leistung.in)  
 The technical specifications are subject to change without notice.