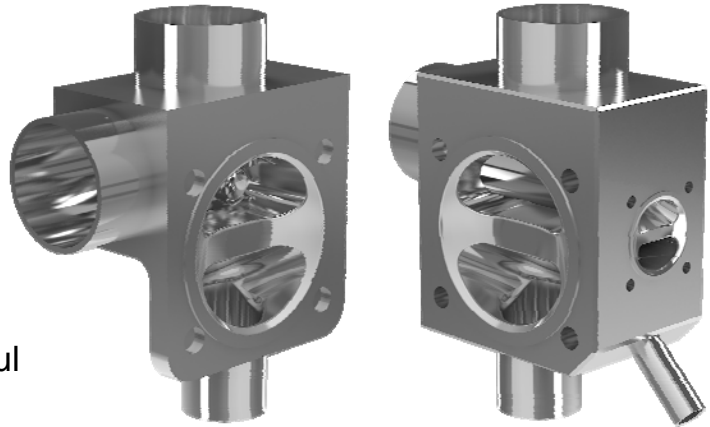


## Zero Dead Leg Valve

Forged stainless steel body,  
Manually or pneumatically operated

- Compact design with zero dead leg
- Optimum security against microbial growth
- Top entry design
- Fully machined from SS 316L bar-stock
- CIP/SIP capable and crevice free – No internal fabrication weld
- Self-draining capabilities
- Option of separate sampling / injection port available – most useful for high purity systems
- Fully Autoclavable



Without Separate Sampling port Model S03V01A0      With Separate Sampling port Model S04V02B0

Commercially available under Series MP as

Series 41 forged Zero Dead Leg (ZDL) valve has a flow-optimized stainless steel body, a diaphragm, and options of manual bonnet assembly or actuator. The stainless steel body is available with various surface finish.

The diaphragm is both a switch as well as a sealing element for the media. It is easily replaceable.

Option of manual bonnet assembly or actuator is provided for the protection of diaphragm and internal mechanism.

Combination of inlet port and flow through port allow media to continuously flow in the loop. Due to this special feature, dead legs are virtually eliminated at inlet port and when the valve is opened one can get clear uncontaminated media free from bacterial growth or other contaminants. Option of a separate sampling port is also available. This port can also be used as a CIP/SIP port. The outlet valve can also be used as drain port during sterilization.

### Technical Data

<b>Connection Size</b>	½" – 3"	
<b>MOC – Wetted (Contact)</b>	Stainless Steel 316L	
<b>MOC – Non-wetted (Non- contact)</b>	Polyamide or ASTM A351 CF8 (SS 304)	
<b>Seal Material</b>	EPDM, PTFE	
<b>Media</b>	Neutral gases and liquids, high purity, sterile, aggressive or abrasive fluids	
<b>Viscosity</b>	Up to viscous	
<b>Surface Finish</b>	Mechanical or Electro Polish	
<b>Media temperature</b>	EPDM	-10°C to +75 °C
	PTFE	-10°C to +90 °C
<b>Ambient temperature</b>	Up to +90 °C	
<b>Sterilization temperature</b>	EPDM	Briefly up to +130 °C
	PTFE	Briefly up to +150 °C
<b>End connections</b>	ASME BPE • V-band (Hygienic) Clamp • Butt-Weld	
<b>Installation</b>	With inlet port in upright position	
<b>Options</b>	Separate sampling connection	

In case of special application conditions, please e-mail at: [rnd@leistung.in](mailto:rnd@leistung.in)  
The technical specifications are subject to change without notice.