

CRYO REGULATOR-ECONOMIZER

Forged Brass body

Application:

Combines the function of Pressure Building and Economizer in one compact unit. Available in a variety of pressure ratings. Also available in dual configuration.



Features:

- ❖ PTFE seat helps assure a positive shut-off at cryogenic temperatures down to -196°C (-320°F)
- ❖ Compact design to fit in close quarters
- ❖ Interchangeable with existing cryogenic regulator units
- ❖ Inlet filter helps prevent foreign material from entering the regulator
- ❖ Locknut is provided to maintain adjusting screw setting
- ❖ Cleaned for liquid oxygen service per CGA G-4.1
- ❖ 100% factory tested

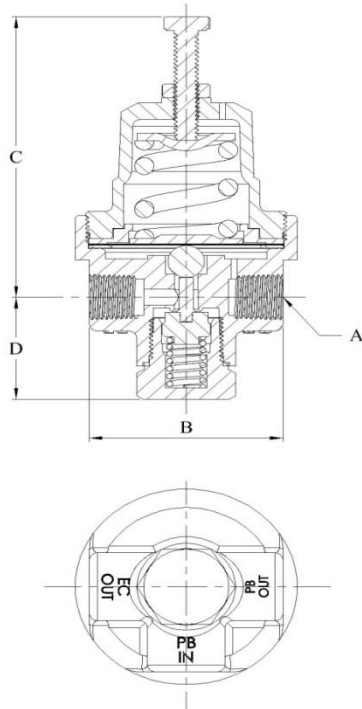
Technical:

- ❖ Designed and manufactured in accordance with ASTM B31.1, EN 1626 & BS ISO 21011
- ❖ Full material traceability backed by BS EN 10204 3.1 certification

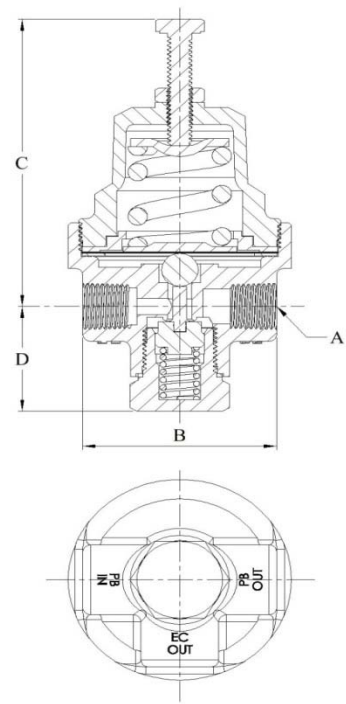
Technical Data:

Connection Size	1/4" NPT(F)
Media	LIN, LAR & LOX
Maximum Inlet Pressure	550 PSIG (37.9 Bar)
Operating Temperature	-320°F TO +149°F (-196°C TO +65°C)
Body	Forged Brass (BS EN 12164 CW617N)
Bonnet	Brass (BS EN 12164 CW721R)
Seat Disc	PTFE
Spring	Stainless Steel (SS 302)
Gasket	PTFE

MODEL "EPP"



MODEL "PEP"



General Information:

Type	Inlet / Outlet/Economizer Connections NPT(F)	Factory Pressure Setting (PSIG)	Operating Range (PSIG)
LECRRE125NEPP	1/4"	125	25-250
LECRRE300NEPP	1/4"	300	150-350
LECRRE325NEPP	1/4"	325	150-350
LECRRE350NEPP	1/4"	350	150-350
LECRRE125NPEP	1/4"	125	25-250
LECRRE300NPEP	1/4"	300	150-350
LECRRE325NPEP	1/4"	325	150-350
LECRRE350NPEP	1/4"	350	150-350

Ordering Chart

ORDER IDENTIFICATION NUMBER

