

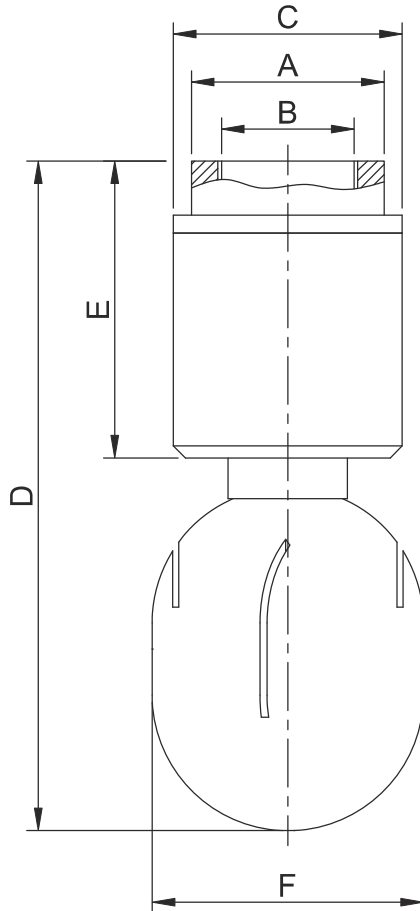
### Series 110 - Spray Ball

Leistung's rotary spray ball uses cleaning media to provide coverage and impact. The device represents an effective alternative to traditional static spray ball because it uses low volumes of cleaning fluid at low pressure. The double ball bearing in the Leistung's rotating head makes the device suitable for all industrial cleaning applications, including tanks, reactors, vessels and other containers.

- Self-rotating and cleaning
- Fully machined from SS 316L
- Easy mounting and inspection
- Complete 360° spray coverage
- Can be installed at any angle
- Various surface finish available



Rotary spray ball, machined Stainless Steel Body



**Fig. 1101**

Dimensions for end connections according to ASME BPE connection type

Refer Figure 1101						
Connection Size	A (mm)	B (mm)	C (mm)	D (mm)	E (mm)	F (mm)
1/2"	A/F 27	1/2" BSPF - 14 TPI	32.0	90.0	42.0	35.0
3/4"	A/F 32	3/4" BSPF - 14 TPI	38.0	111.0	49.3	45.0
1 1/4"	A/F 51	1 1/4" BSPF - 11 TPI	55.0	137.0	51.0	61.0



### Order Sample:

LE	110	A	20	E	T	9
1	2	3	4	5	6	7

### Order Codes:

1	Make	Code
	Leistung	LE
2	Series	Code
	Spray Ball	110
3	Connection std	Code
	ASME BPE	A
	BS 4825	B
4	Connection Size	Code
	1/2"	15
	3/4"	20
	1 1/4"	32

5	Surface Finish	Code
	Mechanical	M
	Electropolish	E
6	Type of End Connection	Code
	BSP Coupling	S
	V - Band (Hygienic clamp)	T
7	Certificate	Code
	ISO 9001	9