

Series 90 - Back Pressure Control valve

Leistung's back pressure control valve is designed to maintain a constant preset inlet pressure on the main valve. It is normally closed, direct acting, spring loaded, diaphragm type control valve. The valve requires no external power to operate.

- Cost effective modular design
- Optimized for size against maximum pressure control
- Completely adjustable pressure control range
- Diaphragm available in various elastomers
- Various internal surface finish options available



Back pressure control valve, Cast Stainless Steel Body, Tc End

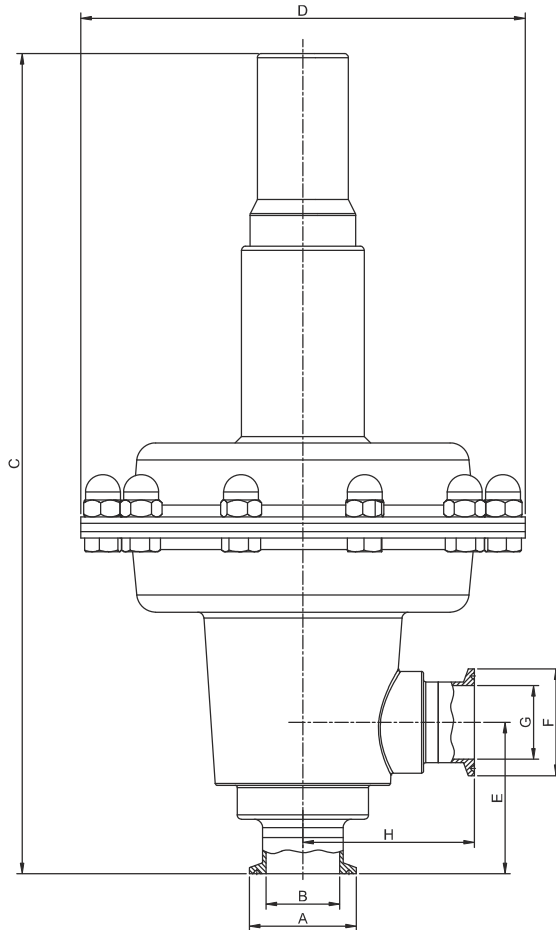


Fig. 901

Dimensions for end connections according to ASME BPE connection type

Refer Figure 901								
Connection Size	A	B	C	D	E	F	G	G
	(mm)	(mm)	(mm)	(mm)	(mm)	(mm)	(mm)	(mm)
1"	50.4	22.1	388.0	210.0	71.50	50.4	22.1	81.0
1 ½"	50.4	34.8	388.0	210.0	71.50	50.4	34.8	81.0
2"	63.9	47.5	388.0	210.0	72.90	63.9	47.5	81.0
2 ½"	77.4	60.2	413.0	210.0	84.20	77.4	60.2	89.4
3"	90.9	72.9	426.0	210.0	90.50	90.9	72.9	95.8



Order Sample:

LE	90	A	25	L	E	T	9
1	2	3	4	5	6	7	8

Order Codes:

1	Make	Code
	Leistung	LE
2	Series	Code
	Back Pressure Control valve	90
3	Connection std	Code
	ASME BPE	A
4	BS 4825	B
	Connection Size	Code
	1"	25
	1 ½"	40
	2"	50
	2 ½"	65
	3"	80
5	MOC of Diaphragm	Code
	Silicon	L
	FKM/FPM (fluoroelastomer)	F

6	Surface Finish	Code
	Mechanical	M
	Electropolish	E
7	Type of End Connection	Code
	Buttweld	B
	V - Band (Hygenic clamp)	T
8	Certificate	Code
	ISO 9001	9